



**Protect your investment and save money  
with our Water for Life program.**



**Extended  
Warranty**



**Discounted  
Replacements**



**Free  
Shipping**



**No  
Contract**

**CONTACT US TO LEARN MORE 866-662-6885**

[waterforlife@aquasana.com](mailto:waterforlife@aquasana.com)



Certified by WQA to NSF/ANSI Standards 42, 53, 401, and CSA B483.1 when used in the AQ-SFRO and AQ-SFRO2 for the reduction of the claims specified on the Performance Data Sheet and at [www.WQA.org](http://www.WQA.org).



For the full list of  
contaminants filtered,  
scan to view the  
Performance Data Sheet  
on Aquasana.com.

The recommended replacement frequency for the AQ-SFRO-S1S3 is every 6 months or 250 gallons of use. Use only certified, genuine Aquasana replacement filters for continued contaminant removal and system performance.

**Aquasana, Inc.**  
4343 S. Hamilton Road  
Groveport, OH 43125  
866-662-6885 USA  
877-332-7873 Canada  
[www.aquasana.com](http://www.aquasana.com)

100368703  
AQ-SFRO-S1S3-R-OM-20260212



AQ-SFRO-S1S3

**Under Sink Water Filter**

**SmartFlow® Reverse Osmosis Carbon Block  
and Advanced Carbon Block Replacements**

**REPLACEMENT**

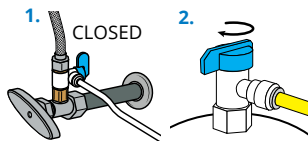
**Owner's Manual**

For use with AQ-SFRO and AQ-SFRO2

## INSTALLATION STEPS

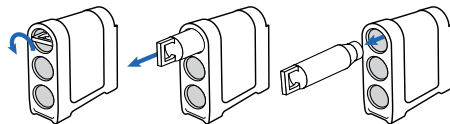
### Prepare for Installation

- 1 **Turn the inlet tee valve** to the CLOSED position (1) and close the water tank valve (2). Release pressure from system by turning on dedicated faucet until water stops flowing. Once water stops flowing from the dedicated faucet, turn the faucet off.



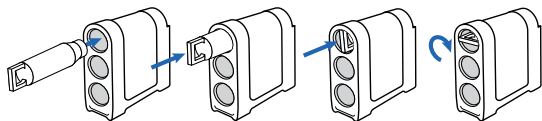
**WARNING:** Failure to release pressure can result in permanent system damage.

- 2 **Unbox filter cartridge replacements** and remove plastic.
- 3 **Remove the Carbon Block filter cartridge** from Stage 1 by turning the handle to the left and pulling out. Discard entire filter cartridge. Repeat for the Advanced Carbon Block (Stage 3).



### Insert Filter Cartridges

- 4 **Insert each filter cartridge** into its designated location in the system manifold by turning to the right with the handle vertically aligned. The guides on each filter will ensure proper alignment within the system manifold.
- 5 **Once the filter is engaged**, push the filter fully in while rotating 90 degrees to the right. Continue this step for each filter.
  - **Top Filter:** Carbon Block
  - **Bottom Filter:** Advanced Carbon Block



Scan to view the SmartFlow® Reverse Osmosis filter replacement video.



### Flush and Check for Leaks

**NOTE:** Do not drink flushed water.

- 6 **Open the inlet tee valve**, open the water tank valve, and confirm dedicated faucet is off. While tank refills, carefully inspect for leaks.
- NOTE:** It will take 1-3 hours for the water tank to refill.
- 7 **After the water tank is full**, turn on the dedicated faucet and empty the tank again.
- 8 **Once the water tank is empty**, turn off the dedicated faucet and allow tank to refill. Repeat this step two more times. Once you have emptied three tanks of water, close all faucets and refill for regular use.

### Care

To clean the system manifold and tank, wipe exterior with a damp cloth. Do not use any strong or abrasive cleaning agent or solvent cleaner.

**NOTICE - Safeguards:** If you are experiencing a tubing connection leak, shut off COLD water, disconnect and re-set the tube.

Do not use with water that is microbiologically unsafe or of unknown quality without adequate disinfection before or after the system.

Conforms to NSF/ANSI 53 for VOC reduction. See performance data sheet for individual contaminants and reduction performance.

Systems certified for cyst reduction may be used on disinfected waters that may contain filterable cysts.

