

NOTICES

- Compatible battery type: CR2450 Lithium Coin Battery
- Compatible battery voltage: 3V
- Ensure battery is installed correctly according to polarity (+ and -).
- Do not mix old and new batteries, different brands or types of batteries, such as alkaline, carbon-zinc, or rechargeable batteries.
- Non-rechargeable batteries are not to be recharged.
- Do not force discharge, recharge, disassemble, heat above 90°F, or incinerate. Doing so may result in injury due to venting, leakage, or explosion resulting in chemical burns.
- Remove and immediately recycle or dispose of batteries from equipment not used for an extended period of time according to local regulations.
- Always completely secure the battery compartment. If the battery compartment does not close securely, stop using the product, remove the batteries, and keep them away from children.
- Remove and immediately recycle or dispose of used batteries according to local regulations and keep them away from children. Do NOT dispose of batteries in household trash or incinerate them.
- Even used batteries may cause injury or death.
- Call a local poison control center for treatment information.

⚠ WARNING

- **INGESTION HAZARD:** This product contains a button cell or coin battery.
- **DEATH** or serious injury can occur if ingested.
- A swallowed button cell or coin battery can cause **Internal Chemical Burns** in as little as **2 hours**.
- **KEEP new and used batteries OUT OF REACH of CHILDREN.**
- **Seek immediate medical attention** if a battery is suspected to be swallowed or inserted inside any part of the body.



NOTE: Must replace housing every 5 years or risk property damage from leaks. Call 866-662-6885 to order.

Do not use with water that is microbiologically unsafe or of unknown water quality without adequate disinfection before or after the system.



water for life®



Protect your investment and save money with our Water for Life program.



Extended Warranty



Discounted Replacements



Free Shipping



No Contract

CONTACT US TO LEARN MORE 866-275-2319

waterforlife@aquasana.com



C US

AQ-5200R, AQ-5300R, and AQ-5300+R are tested and certified by WQA to NSF/ANSI standards 42, 53, and 401 when used in AQ-5200, AQ-5300, and AQ-5300+ for the reduction of the claims specified on the Performance Data Sheet and at www.WQA.org.



For the full list of contaminants filtered, scan to view the Performance Data Sheets on Aquasana.com.

The recommended replacement frequency for the AQ-5200R is every 6 months or 500 gallons of use.

The recommended replacement frequency for the AQ-5300R is every 6 months or 600 gallons of use.

The recommended replacement frequency for the AQ-5300+R is every 6 months or 800 gallons of use.

Use only certified, genuine Aquasana replacement filters for continued contaminant removal and system performance.

Conforms to NSF/ANSI Standard 53 for VOC reduction. See performance data sheet for individual contaminants and reduction performance.

Aquasana, Inc.
6310 Midway Road
Haltom City, Texas 76117
866.662.6885 USA
877.332.7873 Canada
www.aquasana.com

100382788

aq5300_series_replace_2024



AQ-5200R, AQ-5300R, AND AQ-5300+R

Under Sink Water Filter
Claryum® 2-Stage, 3-Stage and 3-Stage Max Flow Filter

REPLACEMENT

INSTALLATION STEPS

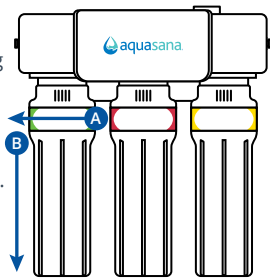
- 1 Shut off the cold water valve** under the sink. Release the pressure from the system by turning on the dedicated faucet. Once there is no longer any water flowing, you can proceed with replacing the filters.

- 2 Unbox filter replacements** and remove plastic. Each filter is color coded to match the color shown on the filter housing.

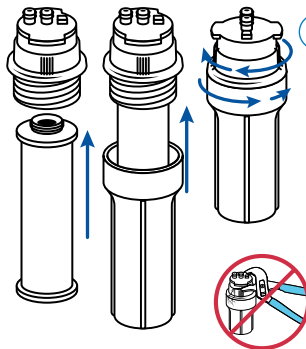
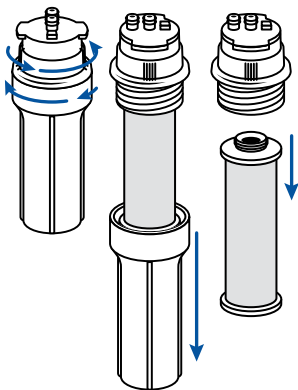
- 3 Remove each filter housing** from the system manifold by turning the filter housing to the left. Pull down to detach. Ensure the filter housings are not on an angle while removing. This may result in damage to the o-ring.

- 4 Holding the filter housing over the sink,** open it by turning the bottom to the left and the top cap to the right. Pour excess water down sink drain. Pull down on dirty filter to disconnect it from the filter housing. Continue this step for the second and third filter housing, if applicable. While the housing is open, inspect each o-ring for damage. If damaged, replace immediately. If misaligned, gently move the o-ring into place.

NOTE: If filter housing is too tight to disconnect by hand, please use the plastic wrench included with original system.



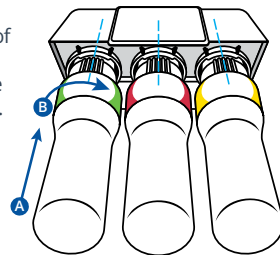
3-Stage Max Flow (AQ-5300+) Example



- 5 Press new replacement filter** to the top cap of the filter housing using the appropriate color coded filters. Then, reconnect the bottom of the filter housing to the top cap. Ensure the threads are correctly aligned, then turn the bottom to the right and the cap to the left to tighten. Continue this step for the second and third filter housing, if applicable.

NOTE: Do not use tools to tighten. Hand tighten only.

- 6 Reattach filter housings** to the bottom of the system manifold. Ensure connection points are correctly aligned, then push the filter housing up while turning to the right. Turn until you feel a 'click' and the filter housing is locked into place. Continue this step for the second and third filter housing, if applicable. Ensure all filter housings are locked into place, are not on an angle, and are aligned as pictured. Improper placement may result in damage to the o-ring or leakage.

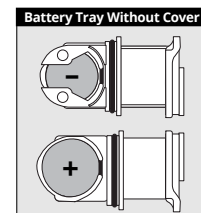
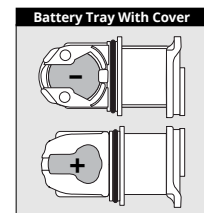
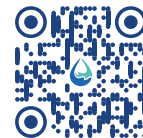


NOTE: Do not drink flushed water.

NOTE: If your system was purchased before 2024, you may not hear the click while attaching the filter housings.

- 7 Open the battery door** and remove the old battery. Dispose of per instructions in NOTICES section. Insert new battery. When inserted correctly, system will beep five times and blink red.

If your system includes a battery tray **with a cover**, please click or scan this QR code for instructions on how to replace your battery.



- 8 Once all filter housings** have been replaced and reattached, slowly turn water valve on. Turn off faucet and inspect for leaks. Then, flush system for 10 minutes before drinking.

NOTE: Do not drink flushed water.

AQ-5200R



Scan to view AQ-5200R replacement video.

AQ-5300R



Scan to view AQ-5300R replacement video.

AQ-5300+R



Scan to view AQ-5300+R replacement video.