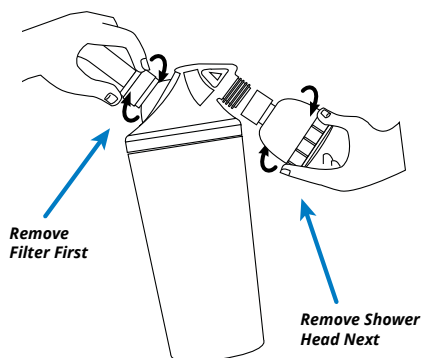




Shower Filter

Replacement Filter Instructions

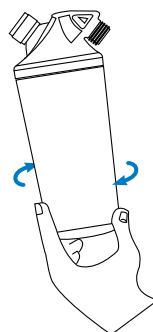
For use with AQ-4105CHR, AQ-4105, AQ-4100, and AQ-4100NSH



1. Remove the entire filter system from your shower pipe by turning the chrome collar to the left. Then remove the shower head by turning the connector to the left.

NOTE:
Do not remove the filter cartridge while the filter is still attached to the shower pipe, this may cause damage to the filter where it connects to the shower pipe.

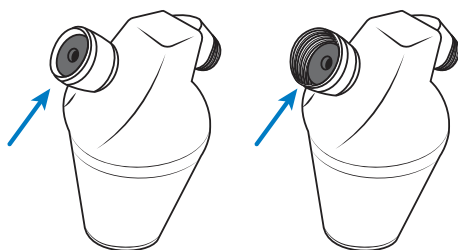
2. While holding the upper filter housing firmly, remove the lower filter cartridge by turning it to the left. Discard old filter.



3. Unbox the replacement filter and remove the plastic. Then remove the yellow pull tab label and yellow plastic shipping cap from the top end of the filter.
4. After making sure the upper housing o-ring is still in place, install the new cartridge by turning it to the right. Tighten firmly by hand.

NOTE:
If this filter is not tightened firmly it will leak around the seam between the upper filter housing and the cartridge.

5. Ensure the white gasket is still present, fully seated and flat and seated correctly inside the chrome collar.

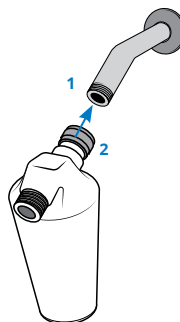


Gasket seated incorrectly

Gasket seated correctly

6. Reattach the filter system to your shower pipe by turning the chrome collar to the right. Turn to the right by hand to tighten. Test the filter for any leaking before continuing. If leaking occurs use a pliers to turn the chrome collar one quarter turn. Do not overtighten. Overtightening may cause the gasket to compress into the inside of the shower pipe.

NOTE:
Ensure there is no plumber's tape on the shower pipe threads. The seal will be made with the white gasket that's seated in the chrome collar.



7. With the shower head unattached, flush the shower filter. Do so by turning on the COLD water for 2 minutes to flush the filter. Then adjust to normal temperature (mixture of hot and cold water). Turn water off and on 3 to 4 times or until the initial surge of water is clear.

NOTE:
The initial surge of water will be discolored due to carbon fines. It is recommended you flush the first 1-2 gallons of water into a bucket.



Protect your investment and save money with our Water for Life program.



Extended
Limited
Warranty



Discount
Replacements



Free
Shipping



No
Contract

CONTACT US TO LEARN MORE waterforlife@aquasana.com



Scan to view
replacement video.



For the full list of contaminants
filtered, scan to view the
Performance Data Sheet
on Aquasana.com.



AQ-4125 is independently tested to NSF/ANSI
Standard 177 when used in AQ-4105CHR,
AQ-4105, AQ-4100, and AQ-4100NSH for
the reduction of the claims specified on
the Performance Data Sheet.

The recommended replacement frequency
for the AQ-4105CHR, AQ-4105, AQ-4100,
and AQ-4100NSH is every 6 months or
10,000 gallons of use. Use only certified,
genuine Aquasana replacement filters
for continued contaminant removal and
system performance.

Aquasana, Inc.

6310 Midway Road
Haltom City, Texas 76117
USA 866.662.6885
CAN 877.332.7873
www.aquasana.com