

WATER FOR LIFE™

Replace your filters on time and without worry — auto delivered to you, for less.



Lifetime Warranty

Our performance promise to you. We'll replace your system parts — for free. You just pay the shipping.



Free Shipping

Replacements shipped directly to you, right when you need them, at no extra cost.



No Contract

Replacing your filters is serious — but your commitment doesn't have to be.



Discounted Replacements

Lock in a 15% discount on filters to ensure you always get the best price.

It's important to change your filters using genuine Aquasana replacements for continued water filtration and optimum system performance. This is why we offer our no contract, no obligation auto-ship filter replacement program called Water for Life.

Speak to a water expert at 866-662-6885 to join Water for Life.



Replacement Instructions

OptimH2O® Whole House Water Filter Replacement

EQ-OPTM-R



OptimH2O Whole House Water Filter - Operation Specs

Size	Pressure Drop Spec	Micron Rating	Electrical Requirements
8" x 42"	15 psid @ 4.82 GPM	0.5	Grounded & Unswitched 115V + 3 AAA Batteries
Rated Capacity	Operating Temperature Range	Minimum Operating Pressure	Maximum Operating Pressure
106,750 Gallons @ 4.82GPM / 404,092 L @ 18.25 LPM	34–120° F / 1–50° C	20 psig / 1.38 bar	125 psig / 8.6 bar

OptimH2O Whole House Water Filter - Certified Performance

NSF/ANSI 53	NSF/ANSI P473	Peak Flow %Reduction of Lead and PFOA/PFOS
99.62% lead and cysts reduction	97.9% PFOA/PFOS reduction	8.54GPM (32.33ppm)

OptimH2O Whole House Water Filter - Internally Tested

Parameter	Influent Challenge Chlorine	Overall % reduction
Chlorine, Chloramines Reduction	3 MG/L ±10%	>90 %

Precautions

- DO NOT USE extra lubricants, unapproved sealants and tools to tighten hand tightened only parts.
- Use of tools other than hand tighten only parts voids warranty.
- Testing was performed under standard laboratory conditions; actual performance may vary.
- Flush the system and change the filter as suggested.
- The contaminants or other substances removed or reduced by this water filter are not necessarily in all users' water.
- Manufactured from NSF/ANSI standard 61 and California Prop 65 Compliant certified coconut shell carbon and raw materials.
- Do not use with water that is microbiologically unsafe or unknown quality without adequate disinfection before or after the system. Systems certified for cyst reduction may be used on disinfected waters that may contain filterable cysts.

The main tank replacement filter for the OptimH2O Whole House Water Filter. This filter is tested and certified to reduce more than 99% of lead and cysts, 98% of PFOA/PFOS, and tackles chlorine, chloramines and more. Experience optimal water filtration for the cleanest and healthiest water.

Aquasana, Inc.
6310 Midway Road
Haltom City, Texas 76117
866.662.6885 · aquasana.com

eqOPTMr_install_20210420

For exclusive deals

- Facebook: facebook.com/aquasana
- Twitter: twitter.com/aquasana
- Instagram: instagram.com/aquasana



The OptimH2O filter is IAPMO tested and certified to NSF/ANSI Standard 53 to reduce both soluble and particulate forms of lead and cysts, and to NSF/ANSI Standard P473 to reduce perfluorooctanoic acid (PFOA) and perfluorooctane sulfonate (PFOS).

Replacing the Cartridge

1. Turn off the water supply to the system by shutting off the inlet and outlet valves on the bypass.
2. Use 3/8" PEX tubing and connect it to the provided John Guest® fitting and shut-off that connects to the inlet side of the filtration system. Run the hose to a floor drain or bucket, and use to drain sediment or to aid in filter removal during change-out.
3. Remove Umbrella Cap on the top of the vessel. Replace the 3 AAA batteries with new batteries. Push and hold the reset button on the metered board for 3 seconds to reset the totalizer. When the totalizer is reset the LED lights will flash green three times.
4. Depressurize the system by pushing down on the red depressurization button on the top cap of the system. Keep the button pushed down until all the air or water pressure is completely released. You will feel the pressure and will not be able to remove the top cap.
5. Push down the top cap with both hands to unseat the snap ring.
6. Remove the snap ring by carefully grasping the handle and pulling inward, then upward. The snap ring should slide completely out of the groove.
7. Remove the top cap off the system by lifting up on the top handles. Remove old filter.
8. Open the John Guest® fitting and shut-off, and flush out the bottom of the system.
9. Look down into the tank assembly, and you should see a small opening centered in the bottom of the tank.
10. Remove packaging from the new filter, place the new cartridge into the tank with the double O-ring facing down.
11. Position the cartridge so that it is aligned with the bottom, center opening.
12. Press down on the cartridge so that the double O-ring seal moves into place within the bottom, center opening.
13. Reposition the top cap into its original location.
14. Reattach the top tank snap ring, pull up on the top cap to seat O-rings.
15. Close the John Guest® fitting and shut-off.
16. Turn the water supply on, opening the inlet and outlet valves on the bypass.
17. Relieve the system of air in the tank as the system fills with water by pushing down on the red depressurization button on the top cap of the system. Keep the button pushed down until all the air pressure is completely released and water comes out of the red depressurization button.
18. Release the red depressurization button.
19. Replace the Umbrella Cap on the top of the system.
20. Check for leaks.
21. Flush the new cartridge for 10 minutes.
22. During flush, confirm green LED lights are flashing with flowing water. If lights are not flashing green, go back to step 3.

#3 Umbrella Cap & LED Lights



Easy to Follow LED Replacement Notifications

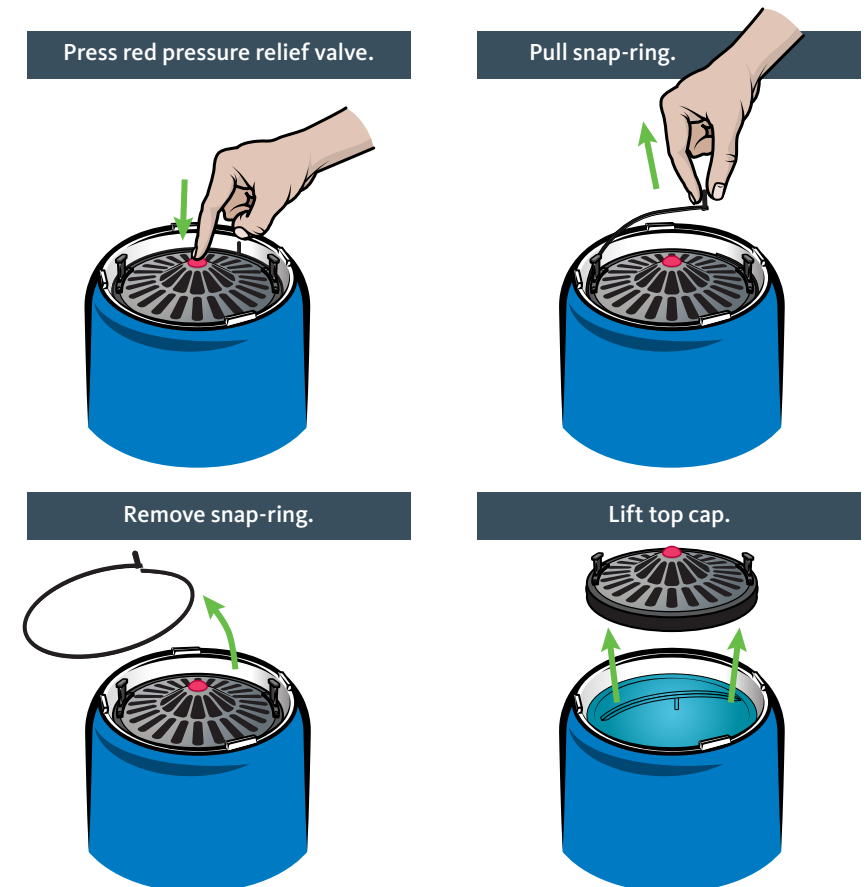
Real-time Dynamic LED System monitors water and flow rate and gives you a visual, color-coded notification, letting you know when it's time to replace your filter.



Simple Filter Replacements. No Tools Needed.

Eliminate the need for unnecessary tools.

Easily replace your filter on your system by following these easy steps:



*Three AAA batteries not included, for battery back-up. Change annually with filter change-out.